
Installation Instructions

for IDVisor Z22



About This Guide

This document describes the process of installing the CardVisor Age Verification software into the Palm Z22 computer present in the IDVisor Z22 Mobile, CounterTop and MSR hardware.

Installation Instructions

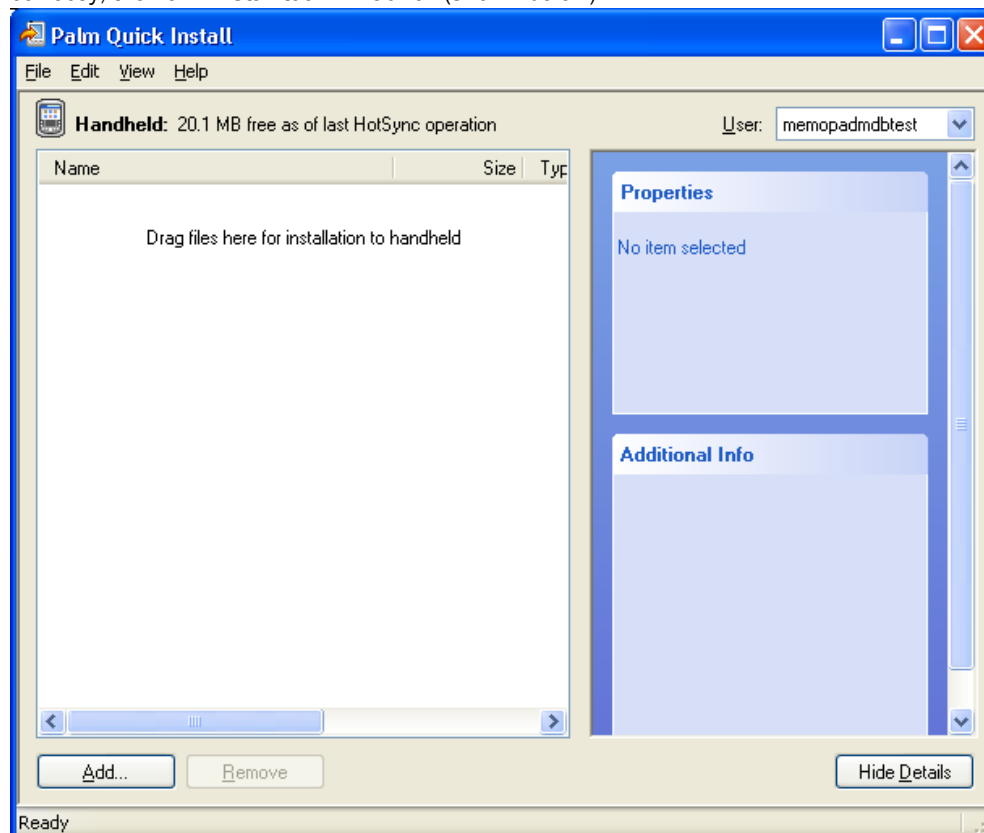
There are X steps to installing the CardVisor® Age Verification software and then configuring the Palm Z22 to work with the software.

Install software using Palm Quick Install tool

Install the *.prc file (e.g. CardVisorZ22_4.55.prc or CardVisorZ22_3.55.prc) using the Palm Quick Install tool.

Launch Palm Quick Install tool

You can launch this tool either by clicking on the *.prc file and if associated with Palm software correctly, the Palm install tool will launch (shown below).



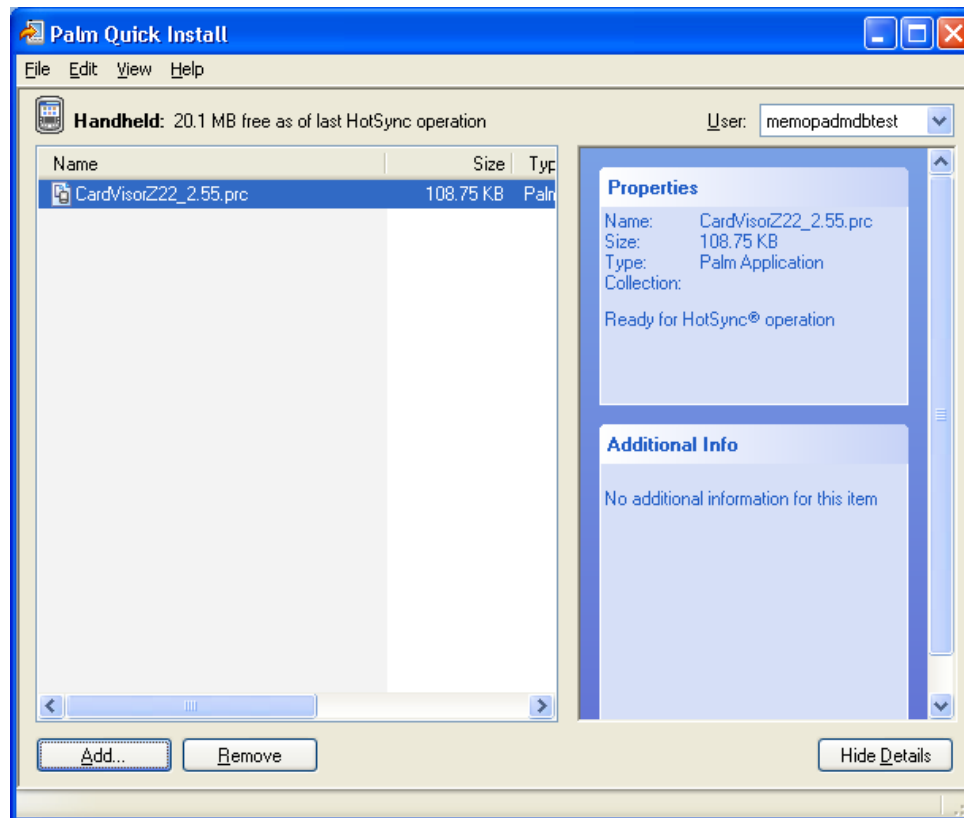
If clicking the PRC file does not automatically launch the Palm Quick Install tool, then look for the Palm Quick Install icon on your desktop or in the program folder.

Set Hotsync User Name

In the Top right corner, select the User name of the scanner that will have the software installed. If one does not exist, then create a name and when the Hotsync process starts, select this name. If one already exists, then use it. Just watch the Hotsync screen during the Hotsync process to make sure the scanner is really using the same name.

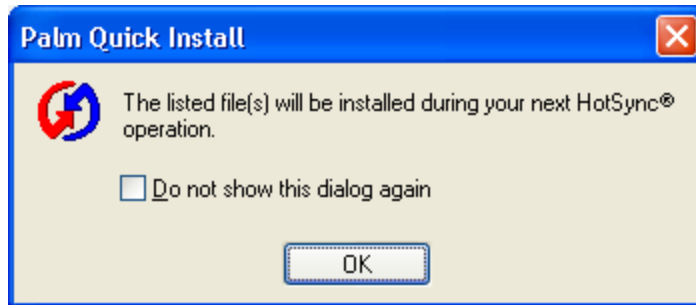
Add *.prc file to the install window.

Either Drag the *.prc files (e.g. CardVisorZ22_4.55.prc or CardVisorZ22_3.55.prc) into the install window or hit the Add button and locate the file on your PC. Once finished, it should look something like this.



Close the Palm Quick Install tool

Close the application. You should see a message like this.



Perform a Hotsync

Perform a Hotsync by tapping on the Hotsync Icon. See the IDVisor software manual for details on how to do a Hotsync and see idscanner.com/help for Hotsync trouble shooting.

Configuring the Palm Z22

Set Date/Time

Make sure the date/time on the Palm is set correct. If not, set the clock by tapping on the very small clock icon just to the right of the house/home icon in the bottom left corner of the screen. See the Hardware User Manual for details.

Associate the left/right buttons

In this part, we will Associate the left/right buttons on the front on the Palm Z22 with the Cardvisor program and the Memopad Applications. When complete, the Cardvisor program will launch when the left button label 'scan IDs' is pressed and the memopad application will launch when the right button label 'view data' is press.

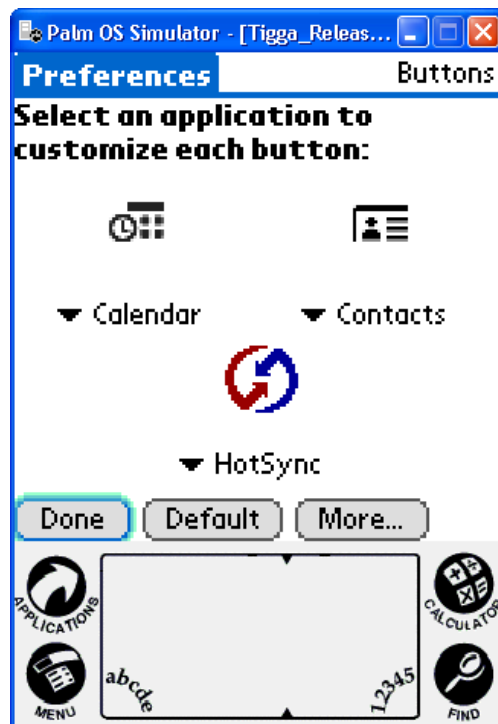
Tap the house icon in the bottom left corner of the screen. The main screen will display



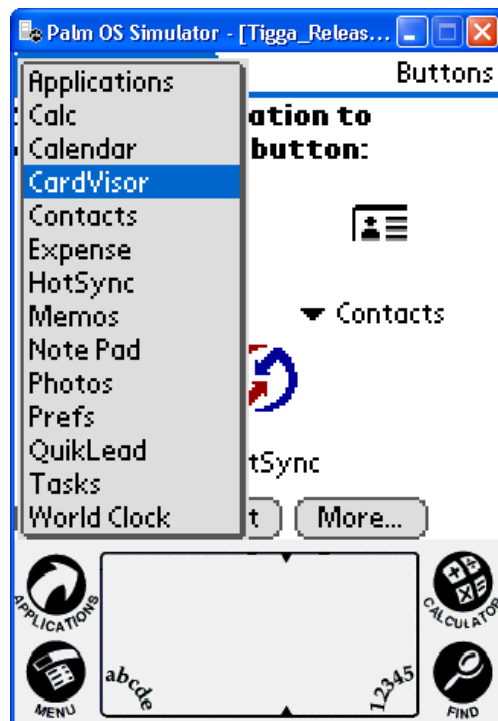
Tap the Prefs icon (button left corner of screen)



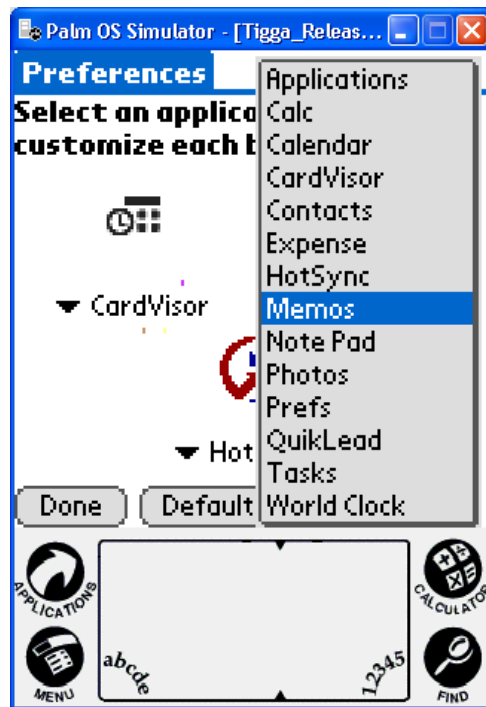
Tap the Buttons Menu Item (highlighted)



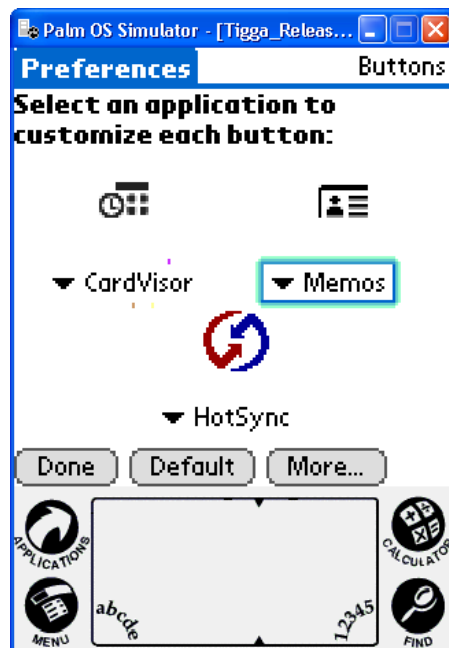
Tap left down arrow key and select CardVisor



Tap right down arrow key and select Memos



Finished screen



Now tap the button on the from on the Palm to scan IDs and the CardVisor program should launch.

Copyright

Printed in the United States of America

3511 Silverside Rd.
Suite 105
Wilmington, DE 19810
www.TokenWorks.com

Copyright 2009 TokenWorks, Inc.

Information in this document is subject to change without notice. No part of this document may be reproduced or transmitted in any form or by any means, electronic or mechanical, for any purpose, without the express written permission of TokenWorks, Inc.

TokenWorks, CardTool, CardScribe, CardDB, and CardVisor are trademarks of TokenWorks, Inc. Visor and Handspring are trademarks of Handspring Inc.

Document Information

EVOLUTION OF THE DOCUMENT			
Version	Date	Author	Evolution
IM-082802-CC-R0	08/28/02	PC	First draft of Installation Instructions
	11/07/02	CC	Changed screen graphic to show CardVisor updater
	2/5/03	CC	Revised Updater name for CardDB version 3.
	2/11/04	CC	Revised with detailed Palm Desktop/Install Tool directions.